



trade furniture & joinery (group) limited

Your comfort style & Value!..

Manufactures of

Modern Design Kitchens
Office & Shop Fittings
Customized Doors & Windows
Interior & Exterior Furniture's
Design & Build
Custom Joinery



Suprisingly Different !!.

www.tfnj.com.fj

Call Us (679) 6700786



trade furniture & joinery (group) limited

Your comfort style & Value!..

TABLE OF CONTENTS

INTRODUCTION	1
COMPANY SERVICES & PRODUCTS	2 - 5
PROJECT TEAM	6
SUMMARY	7
REGION & OPERATION	8
RELEVANT EXPERIENCE	9 - 25
SUMMARY	26 - 29

Manufactures of

Modern Design Kitchens
Office & Shop Fittings
Customized Doors & Windows
Interior & Exterior Furniture's
Design & Build
Custom Joinery

Lot 1 Vunirewa Sub Division, Nadi Back Rd.
P.O. Box 1457
Nadi, Fiji Islands.
Ph : (679) 6700786 Fax : (679) 6700883
Email : tradefurniture@yahoo.com



trade furniture & joinery (group) limited

Your comfort style & Value!..

INTRODUCTION

Established in 2007, **trade furniture & joinery (group) limited** is a successful joinery manufacturer. With our unflattering commitment to quality and craftsmanship, **trade furniture & joinery (group) limited** has a prestigious reputation in Fiji & abroad.

Meticulous attention to detail woodworking skills and innovative design, together with a flexible personalized approach have helped ensure that **trade furniture & joinery (group) limited** can always meet the most discerning clients needs.

We currently employ 6 Expatriate Joiners from Philippine, 20 tradesmen, 3 wood carvers, 8 machineries and 5 polishers, administrative staff including on-site joiners, in dedication installation teams, supported by our fleet of easy identifiable commercial vehicles.

Many of our key personnel have a number of years of experience which helps ensure continuity for client business.

We have completed individual specialist joinery contracts and have been pleased to be associated with many very clients. Whilst we do not generally advertise these clients, we can provide personal references if required.

If you are looking for a high quality piece of furniture made, carvings a built-in set of cabinets or wardrobes, and you need quality, dependability or woodworking services, then contact **trade furniture & joinery (group) limited**. We 'guarantee' you wont be disappointed.

trade furniture & joinery (group) limited also designs and building projects.

Lot 1 Vunirewa Sub Division, Nadi Back Rd.
P.O. Box 1457
Nadi, Fiji Islands.
Ph : (679) 6700786 Fax : (679) 6700883
Email : tradefurniture@yahoo.com

www.tfnj.com.fj

THE COMPANY AND THEIR SERVICES AND PRODUCTS

trade furniture & joinery (group) limited

Your comfort style & Value!..

offers professional services :

- Interior office fit out
- Outdoor Furniture
- Kitchen interior designs
- Carpentry office fit out
- General ceiling works
- Specialized kitchens
- Project Management
- Resort Projects
- Design & Build
- Renovations
- We supply and install
- Granite and Marble



Lot 1 Vunirewa Sub Division, Nadi Back Rd.
P.O. Box 1457
Nadi, Fiji Islands.
Ph : (679) 6700786 Fax : (679) 6700883
Email : tradefurniture@yahoo.com

Your comfort style & Value!..

polynesian arts & crafts

True island creative

offers professional services :

- Creative wood carving
- Tapa Design specialized
- Customized handicraft
- Interior designing specialized
- Magimagi Specialized
- Fijian Artifacts
- Souvenirs
- Wood products



Lot 1 Vunirewa Sub Division, Nadi Back Rd.
P.O. Box 1457
Nadi, Fiji Islands.
Ph : (679) 6700786 Fax : (679) 6700883
Email : tradefurniture@yahoo.com

True island creative

THE COMPANY AND THEIR SERVICES AND PRODUCTS



trade furniture & joinery (group) limited

Your comfort style & Value!..

island pacific apparel

Dressing you in style

offers professional services :

- General Corporate wear
- Made to measure wear
- Polo T-shirts, R-necks
- Sports Uniforms
- Resort wear
- Kids wear
- Mens & Ladies wear
- Embroidery
- Screen Printing
- Creative Designs
- Sublimation
- Sublimation Designs
- Sulu's & Surf wears



Lot 1 Vunirewa Sub Division, Nadi Back Rd.
P.O. Box 1457
Nadi, Fiji Islands.
Ph : (679) 6700786 Fax : (679) 6700883
Email : tradefurniture@yahoo.com

Dressing you in style

THE COMPANY AND THEIR SERVICES AND PRODUCTS



Reliable You Can Trust On

offers professional service :
Suppliers of :

- Hardware Merchants
- Cabinetry Fittings
- Office fit out
- Commercial Fittings

Phone / Fax : 6700474

Mobile : 9468039 / 9728790

Email : pridehardware@hotmail.com

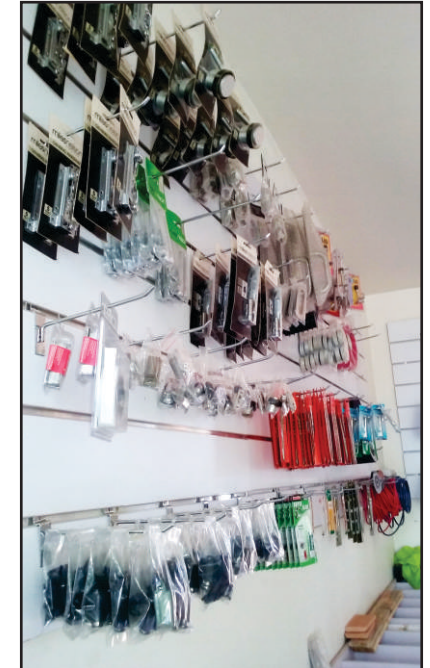
Lot 1 Vunirewa Sub Division, Nadi Back Rd.

P.O. Box 1457

Nadi, Fiji Islands.

Ph : (679) 6700786 Fax : (679) 6700883

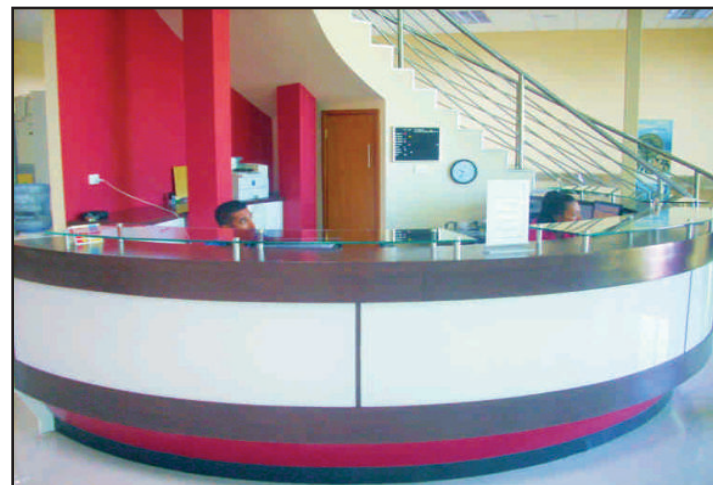
Email : tradefurniture@yahoo.com



PROJECT TEAM

trade furniture & joinery (group) limited has an excellent team with mix of qualified staffs including general foreman, senior joiners, estimator, planners, CAD draft, wood carver and administration support staffs.

GENERAL FOREMAN	1
EXPATRIATE JOINERS	6
TRADESMEN	20
WOOD CARVES	3
CAD TECHNICIAN	1
MACHINERS	8
ADMINISTRATION	5
ESTIMATOR	1
HANDYMAN'S	12
POLISHER	5



Lot 1 Vunirewa Sub Division, Nadi Back Rd.
P.O. Box 1457
Nadi, Fiji Islands.
Ph : (679) 6700786 Fax : (679) 6700883
Email : tradefurniture@yahoo.com



SUMMARY

WE BELIEVE OUR EXPERIENCED TEAM, APPROACH, APPRECIATION OF PROJECTS AND OUR DESIGN & BUILD SKILLS MAKE US WELL PLACED TO OFFER THE BEST SERVICES FOR ANY PROJECTS

THE KEY FACTORS WHICH SET **trade furniture & joinery (group) limited** TEAM FOR ALL MULTIPLE PROJECTS ARE BASED ON:

- RESPONSIVENESS TO THE CLIENTS REQUIREMENTS.
- IDENTIFICATION AND OPTIMIZATION OF ALL DESIGN OPTIONS AVAILABLE.
- A HIGH DEGREE OF PRE-PLANNING.
- CLOSE MONITORING AND REPORTING OF PROJECT TIME, COST AND QUALITY.
- AFFECTIVE COMMUNICATION AND REPORTING OF PROJECT TEAM MEMBERS.
- TRACK RECORDED FOR DELIVERING SUCCESSFUL PROJECTS THAT MEETS, AND OFTEN SUCCEEDS, CLIENT COST, TIME AND INTRODUCING FRESH IDEAS AND SOLUTIONS.

REGION OF OPERATION

trade furniture & joinery (group) limited OPERATE THROUGHOUT FIJI ISLANDS AND WORKED IN ASSOCIATION WITH OTHER CONSULTANTS IN VARIOUS TOWNS AND ISLAND RESORTS.

trade furniture & joinery (group) limited SPECIALIZES IN:

- BEDDINGS
- MODERN CONTEMPORARY FURNITURE
- INTERIOR & EXTERIOR FURNITURES
- RESORT RENOVATION
- KIDS BEDROOM & STUDYTABLE
- COMPLETE REFURBISHMENT
- MODERN DESIGNED KITCHENS
- DESIGN & BUILD
- CUSTOMIZED DOORS & WINDOWS
- INTERIOR RENOVATIONS
- COMMERCIAL FURNITURES
- CUSTOM JOINERY
- BI-FOLD DOORS & WINDOWS



Lot 1 Vunirewa Sub Division, Nadi Back Rd.
P.O. Box 1457
Nadi, Fiji Islands.
Ph : (679) 6700786 Fax : (679) 6700883
Email : tradefurniture@yahoo.com



RELEVANT EXPERIENCE OF trade furniture & joinery (group) limited



MARSH, LAUTOKA.



P MEGHJI SPA, LAUTOKA.



Lot 1 Vunirewa Sub Division, Nadi Back Rd.
P.O. Box 1457
Nadi, Fiji Islands.
Ph : (679) 6700786 Fax : (679) 6700883
Email : tradefurniture@yahoo.com

P MEGHJI LIQUOR, SUVA.



RELEVANT EXPERIENCE OF trade furniture & joinery (group) limited



RAFFLES GATEWAY, NADI.



TOTAL SERVICE STATION.



WILLIAMS & GOSLINGS, NADI AIRPORT.

Lot 1 Vunirewa Sub Division, Nadi Back Rd.
P.O. Box 1457
Nadi, Fiji Islands.
Ph : (679) 6700786 Fax : (679) 6700883
Email : tradefurniture@yahoo.com



RELEVANT EXPERIENCE OF trade furniture & joinery (group) limited



AMANUCA ISLAND RESORT



WATER FRONT HOTEL , LAUTOKA.

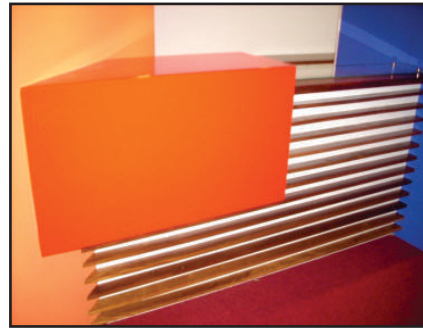


PUNJA'S LAUTOKA.

Lot 1 Vunirewa Sub Division, Nadi Back Rd.
P.O. Box 1457
Nadi, Fiji Islands.
Ph : (679) 6700786 Fax : (679) 6700883
Email : tradefurniture@yahoo.com



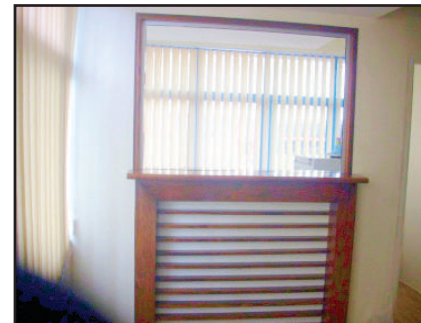
RELEVANT EXPERIENCE OF trade furniture & joinery (group) limited



SMART TRAVEL-SUVA.



PRASAD'S STUDIO, LAUTOKA.



VANUATU HIGH COMMISSION.

Lot 1 Vunirewa Sub Division, Nadi Back Rd.
P.O. Box 1457
Nadi, Fiji Islands.
Ph : (679) 6700786 Fax : (679) 6700883
Email : tradefurniture@yahoo.com



RELEVANT EXPERIENCE OF trade furniture & joinery (group) limited (JANE) COLLECTION



**Jane Round Table-JRT-01
(LIGHT & DARK STAIN)**



**Jane Round/corner Table
JRCT-02
(LIGHT & DARK STAIN)**



**Jane Barstools-JB-03
(LIGHT & DARK STAIN)**



**Jane Small Arm Chair
JSAC-06
(LIGHT & DARK STAIN)**



**Jane Bedside Drawers-JBD-07
(LIGHT & DARK STAIN)**



**Jane Armless Chair-JAC-04
(LIGHT & DARK STAIN)**



**Jane 3 Seat Sofa
JSS-08
(LIGHT & DARK STAIN)**



**Jane Round D Table-JRDT-011
(LIGHT & DARK STAIN)**



**Jane Entertainment Unit-JEU-010
(LIGHT & DARK STAIN)**



**Jane Rect D Table-JRT-09
(LIGHT & DARK STAIN)**



**Jane Upholstered Chair-JUC-05
(LIGHT & DARK STAIN)**



**Jane D Chair With Arms-JCWA-012
(LIGHT & DARK STAIN)**

Lot 1 Vunirewa Sub Division, Nadi Back Rd.
P.O. Box 1457
Nadi, Fiji Islands.
Ph : (679) 6700786 Fax : (679) 6700883
Email : tradefurniture@yahoo.com

RELEVANT EXPERIENCE OF trade furniture & joinery (group) limited (RATU'S) COLLECTION



Yatule beach Resort Fiji.

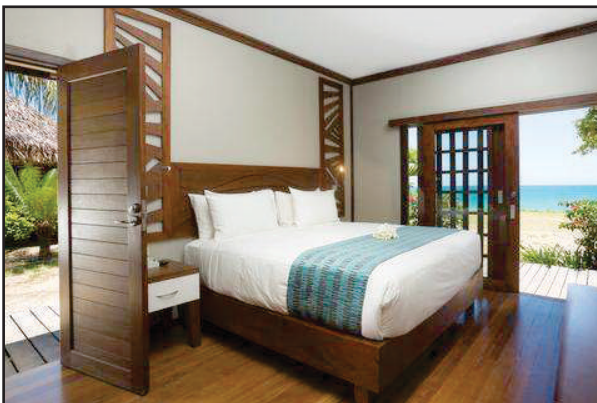


Furniture fitout at Sheraton Resort.



**Ratu Armless Chair
 RAC-01
 (LIGHT & DARK STAIN)**

**Ratu 3 Seat Sofa
 R3SS-02
 (LIGHT & DARK STAIN)**



Yatule beach Resort interior bure.



Interior finishing at Fijian Resort Villa.



Sheraton Fiji Resort

Lot 1 Vunirewa Sub Division, Nadi Back Rd.
 P.O. Box 1457
 Nadi, Fiji Islands.
 Ph : (679) 6700786 Fax : (679) 6700883
 Email : tradefurniture@yahoo.com



RELEVANT EXPERIENCE OF trade furniture & joinery (group) limited (NADI) COLLECTION



**Nadi Chaise Lounge W Arm Lhf
-NCL-01
(LIGHT & DARK STAIN)**



**Nadi Bedside Table
-NBT-02
(LIGHT & DARK STAIN)**



**Nadi Entertainment Unit
-NEU-03
(LIGHT & DARK STAIN)**



**Nadi Coffee Table Wcube Stools
-NCT04
(LIGHT & DARK STAIN)**



**Nadi Chest Of Drawers
-NCD-05
(LIGHT & DARK STAIN)**



**Nadi Wood Headboard
-NWH-07
(LIGHT & DARK STAIN)**



**Nadi Shieivering Headboard
-NSH-08
(LIGHT & DARK STAIN)**



**Nadi Desk-ND-06
(LIGHT & DARK STAIN)**

Lot 1 Vunirewa Sub Division, Nadi Back Rd.
P.O. Box 1457
Nadi, Fiji Islands.
Ph : (679) 6700786 Fax : (679) 6700883
Email : tradefurniture@yahoo.com



The Progress of job at Fijian Resort Chi Spa



Restaurant Furniture Supplied at Fijian Resort



Vesi Timber at Fijian Resort



RELEVANT EXPERIENCE OF trade furniture & joinery (group) limited (NADRO) COLLECTION



**Nadro Canopy Bed
-NCB 01
(DARK & LIGHT STAIN)**

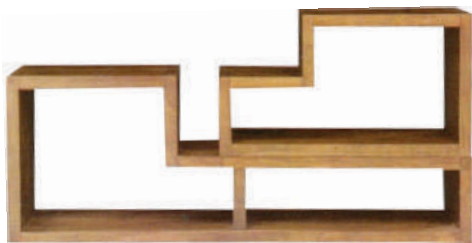


**Nadro Bed base with plain Headboard
-NBBPH-02
(DARK & LIGHT STAIN)**



**Nadro plain Headboard
-NPH-03
(DARK & LIGHT STAIN)**

**Nadro Sur Mirror
-NSM-06
(LIGHT & DARK STAIN)**



**Nadro Shelving Unit
-NSU-08
(LIGHT & DARK STAIN)**



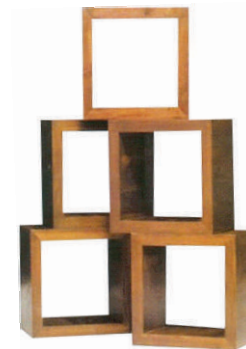
**Nadro Ottoman
-NO-07
(DARK & LIGHT STAIN)**



**Nadro Open Headboard
-NOH-09
(LIGHT & DARK STAIN)**



**Nadro Rect Mirrors
-NRM-05
(LIGHT & DARK STAIN)**



**Nadro Open Cubes
-NOC-04
(LIGHT & DARK STAIN)**

Lot 1 Vunirewa Sub Division, Nadi Back Rd.
P.O. Box 1457
Nadi, Fiji Islands.
Ph : (679) 6700786 Fax : (679) 6700883
Email : tradefurniture@yahoo.com



RELEVANT EXPERIENCE OF trade furniture & joinery (group) limited (CUSTOM DOOR DESIGNS)



TFNJ D1



TFNJ D2



TFNJ D3



TFNJ D4



TFNJ D5



TFNJ D6



TFNJ D7



TFNJ D8



TFNJ D9



TFNJ D10



TFNJ D11



TFNJ D12



TFNJ D13



TFNJ D14



TFNJ D15



TFNJ D16

Lot 1 Vunirewa Sub Division, Nadi Back Rd.
P.O. Box 1457
Nadi, Fiji Islands.
Ph : (679) 6700786 Fax : (679) 6700883
Email : tradefurniture@yahoo.com



RELEVANT EXPERIENCE OF trade furniture & joinery (group) limited (CUSTOM DOOR DESIGNS 2)



TFNJ D17



TFNJ D18



TFNJ D19



TFNJ D20



TFNJ D21



TFNJ D22



TFNJ D23



TFNJ D24



TFNJ D25



TFNJ D26



TFNJ D27



TFNJ D28



TFNJ D29



TFNJ D30



TFNJ D31



TFNJ D32



TFNJ D33



TFNJ D34



TFNJ D35



TFNJ D36



TFNJ D37



TFNJ D38



TFNJ D39



TFNJ D40



TFNJ D41



TFNJ D42



TFNJ D43



TFNJ D44



TFNJ D45



TFNJ D46

Lot 1 Vunirewa Sub Division, Nadi Back Rd.
P.O. Box 1457
Nadi, Fiji Islands.
Ph : (679) 6700786 Fax : (679) 6700883
Email : tradefurniture@yahoo.com



RELEVANT EXPERIENCE OF trade furniture & joinery (group) limited (BI-FOLD DOORS)



Lot 1 Vunirewa Sub Division, Nadi Back Rd.
P.O. Box 1457
Nadi, Fiji Islands.
Ph : (679) 6700786 Fax : (679) 6700883
Email : tradefurniture@yahoo.com



RELEVANT EXPERIENCE OF trade furniture & joinery (group) limited
(LOUNGE WITH BED & HEADBOARD)



Lot 1 Vunirewa Sub Division, Nadi Back Rd.
P.O. Box 1457
Nadi, Fiji Islands.
Ph : (679) 6700786 Fax : (679) 6700883
Email : tradefurniture@yahoo.com



**RELEVANT EXPERIENCE OF trade furniture & joinery (group) limited
(ENTERTAINMENT UNIT & STUDY TABLE)**



Lot 1 Vunirewa Sub Division, Nadi Back Rd.
P.O. Box 1457
Nadi, Fiji Islands.
Ph : (679) 6700786 Fax : (679) 6700883
Email : tradefurniture@yahoo.com



RELEVANT EXPERIENCE OF trade furniture & joinery (group) limited
(COFFEE TABLE, DINNING TABLE WITH CHAIRS)



Lot 1 Vunirewa Sub Division, Nadi Back Rd.
P.O. Box 1457
Nadi, Fiji Islands.
Ph : (679) 6700786 Fax : (679) 6700883
Email : tradefurniture@yahoo.com



RELEVANT EXPERIENCE OF trade furniture & joinery (group) limited
(BAR TABLES & CHAIRS)



Lot 1 Vunirewa Sub Division, Nadi Back Rd.
P.O. Box 1457
Nadi, Fiji Islands.
Ph : (679) 6700786 Fax : (679) 6700883
Email : tradefurniture@yahoo.com



RELEVANT EXPERIENCE OF trade furniture & joinery (group) limited
(OUTDOOR DINNING & CAFÉ COLLECTION)



Lot 1 Vunirewa Sub Division, Nadi Back Rd.
P.O. Box 1457
Nadi, Fiji Islands.
Ph : (679) 6700786 Fax : (679) 6700883
Email : tradefurniture@yahoo.com



**RELEVANT EXPERIENCE OF trade furniture & joinery (group) limited
(OUTDOOR DINNING & LIVING ROOM SET)**



Lot 1 Vunirewa Sub Division, Nadi Back Rd.
P.O. Box 1457
Nadi, Fiji Islands.
Ph : (679) 6700786 Fax : (679) 6700883
Email : tradefurniture@yahoo.com



THE FOLLOWING IS THE LIST OF COMPANIES & PERSONAL YOU MAY CONTACT FOR REFEREES AS THESE ARE PROJECTS OUR COMPANY WAS AWARDED TENDERS FOR

**Sheraton Resort Denarau
Complete Furniture & Joinery Fit Out.**



**Yatule Beach Resort @ Natadola Beach
Complete Refurbishment & Joinery Fit-out**



Lot 1 Vunirewa Sub Division, Nadi Back Rd.
P.O. Box 1457
Nadi, Fiji Islands.
Ph : (679) 6700786 Fax : (679) 6700883
Email : tradefurniture@yahoo.com



THE FOLLOWING IS THE LIST OF COMPANIES & PERSONAL YOU MAY CONTACT FOR REFEREES AS THESE ARE PROJECTS OUR COMPANY WAS AWARDED TENDERS FOR

**Fijian Resort & Spa
Complete Refurbishment & Supplied furniture.
Joinery Fit-out.**



**Amanuca Island Resort
Complete Refurbishment & Joinery Fit-out.**



Lot 1 Vunirewa Sub Division, Nadi Back Rd.
P.O. Box 1457
Nadi, Fiji Islands.
Ph: (679) 6700786 Fax: (679) 6700883
Email: tradefurniture@yahoo.com



THE FOLLOWING IS THE LIST OF COMPANIES & PERSONAL YOU MAY CONTACT FOR REFEREES AS THESE ARE PROJECTS OUR COMPANY WAS AWARDED TENDERS FOR

**Sheraton Fiji Resort, Denarau Island Fiji
Complete Office Fitout , Refurbishment and General Maintenance**

**Intercontinental Resort, Natadola
Sub Conference Room from Premium Service**

**Airports Fiji Limited, Control Tower, Nadi & Nausori
Complete Refurbishment Training Center, CCTV Room & All Domestic Checkout Counters
Ed Telecom Section.**

**Vanuatu High Commission , Suva
General Office Fitout**



THE FOLLOWING IS THE LIST OF COMPANIES & PERSONAL YOU MAY CONTACT FOR REFEREES AS THESE ARE PROJECTS OUR COMPANY WAS AWARDED TENDERS FOR

**Habitat Design Limited - P Meghji Building Marine Drive Lautoka.
Renovation & Fit-Out Works for Marsh Ltd, Blue Lagoon.
Post Fiji, Denarau.
Hotel Equipment, Namaka.**

**Tappoo's Home & Leisure, Nadi.
Tappoo's City, Suva.
Interior Refurbishment & Complete Fit-Out fof Home & Leisure.
Shop, Nadi & Suva.**

**Plantation Island Resort.
Lomani Island Resort.
Bure Fit-Outs, Conference Center.**

**Tokoriki Sheraton Resort & Spa
General Joinery Fitout**

**Mana Island Resort.
General Fitout.**



trade furniture & joinery (group) limited

Your comfort style & Value!..

Manufactures of

**Modern Design Kitchens
Office & Shop Fittings
Customized Doors & Windows
Interior & Exterior Furniture's
Design & Build
Custom Joinery**

Address

**Lot 1 Vunirewa Sub-division
Nadi Back Rd.
P.O Box 1457 Nadi, Fiji
Ph : +679 6700786
Fax : +679 6700883
Email : tradefurniture@yahoo.com
Website : www.tfnj.com**

QUALITY, PASSION and EXPERIENCE.

...live your dream with the comforts of our designed furnitures!!